



**NAKAMOTO
FORESTRY**

EUROPE



Yakisugi (Shou Sugi Ban) from Nakamoto Forestry

Thank you for your interest in our Yakisugi. We are the world's largest manufacturer and supplier of **authentic Japanese charred wood siding** and there are many reasons why Nakamoto Forestry is the best choice:

We provide **beautiful, long-lasting, low-maintenance, sustainable products.**

Please enjoy discovering more important benefits in this brochure and feel free to visit our website for more information at nakamotoforestry.eu or contact me if you have any further questions. I look forward to hearing from you.

Best wishes,

Martin Gottschlich

Martin Gottschlich
General Manager

Who we are

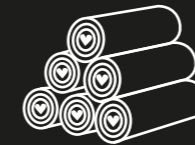
Nakamoto Forestry is a family-run business specialised in producing charred cedar timber for over 60 years and is headquartered on the west side of Japan. We own 2,000 hectares of managed forest and have four main mills in Hiroshima and Tokushima prefectures that complete the entire charred cedar manufacturing process. Nakamoto Forestry is affiliated with WoodOne, one of the largest flooring manufacturers in Japan. We distribute internationally in Europe as well as in North America via two partner organisations, each with own stock warehouse and prefinish shops.

Nakamoto Forestry is SGECC certified, the Japanese equivalent to the global independent sustainable forest management certification system PEFC. Worldwide we mill, char, and ship approx. 1 million square metres of Yakisugi annually. We are able to manage any project of any size.



THE ORIGINAL

Nakamoto Forestry is family-owned and the world's largest manufacturer of Yakisugi – the Original from Japan. Above all, skilfully manufactured with passion and decades of experience.



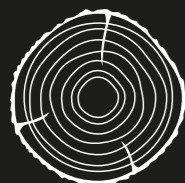
TOP QUALITY

As Japanese manufacturer, we are the Yakisugi experts and strive for top quality, always. For instance, we only use Sugi, Japanese cypress, which for centuries is best suited timber to produce excellent Yakisugi (Shou Sugi Ban).



BEST VALUE

Our products are attractively priced and are very durable with little to no maintenance required. As such it is great value for your investment. We pride ourselves with high customer service and are able to offer the shortest lead times for our shipments.



AUTHENTIC

Yakisugi is a traditional Japanese method to preserve wood and has been used for hundreds of years in Japan. It requires high degree of craftsmanship in a delicate process and needs considerable experience to master.



NATURAL

Our products are sustainable PEFC timber, with low carbon footprint. Natural timber is preserved by skilled treatment with fire. Therefore, we can install it without finishes, alternatively with natural oils without chemicals or solvents.



CONTEMPORARY

The unique and individual design of each board provides an exclusive appearance. Its natural beauty and modern, timeless stylishness is increasingly popular not only in Japan but in Europe and North America.

What is Yakisugi (Shou Sugi Ban)?

Yakisugi is an authentic, natural and contemporary high-quality siding and charred wood cladding solution. It is authentic to traditional Japan and conventionally only uses Sugi (*Cryptomeria japonica*), commonly known as Japanese cedar. This charred wood cladding gets its distinct appearance as well as its high longevity by a century-old charring method.

As a result, this heat treatment lengthens siding longevity by preventing decay, rot, and insect infestation, makes the planks more dimensionally stable, and improves fire retardancy.

Yakisugi does in general not need preventive maintenance by way of re-oiling, except to keep colour consistent if a patina is not desired. Many customers, however, fancy a product completely natural, which is preserved naturally with a rich and natural patina. Ultimately, it is increasingly becoming an aesthetic, desirable and contemporary option also in Western markets.

Our Products

Our Yakisugi products come in three basic traditional surfaces:

Suyaki (original charred), **Gendai** (brushed once), and **Pika-Pika** (brushed twice).

Nakamoto Forestry Europe inventories all three in multiple grades, profiles, and oil finishes at our workshop. That's how we are able to deliver quickly and service your projects across Europe on time. Furthermore, we offer the three surfaces in a variety of dimensions, wood grades, profiles, and oil prefinishes. Please inquire about our currently available stock.

Each board is expertly graded by hand to the specific end product at each step in production, and boards that warp, check, or are otherwise blemished are deselected. Additionally, due to the nature of cypress we putty with resin glue to minimize and repair loose knots, then finally apply earth-friendly, highest-grade oil prefinishes to bond in soot, achieve a customer-specified colour tone, and slow down the weathering process.



Suyaki

The original Yakisugi

Suyaki is the most traditional and easily recognizable of our Yakisugi. It is also often referred to as “alligator skin” or “silk wood” outside of Japan. The charred soot is water-repellent and also partially protecting from UV. Therefore, Suyaki has the best wood and colour longevity as well as maximum fire resistance. We apply oil prefinishes to have the soot layer fixated. This prevents soot from coming off when touched, but also reduces blemishes and makes installation easier. In Japan there are numerous houses with Suyaki products applied for 80+ years with little to no maintenance.

Gendai

Brushed once

Gendai is our most popular Yakisugi (Shou Sugi Ban) surface for exterior applications. A single pass through the brush machine knocks down the heavy soot layer and leaves a smooth, silky look. The burnt fibre crevasse shadows are subtle, and Gendai can either be installed without an oil prefinish, with a traditional oil prefinish, or with a water-based prefinish depending on the appearance or colour desired.

Pika-Pika

Brushed twice

Pika-Pika is created by running the product through a second wire brushing process that removes all loose soot from the softer spring growth rings and leaves the late wood as contrasting burnt ridges. It is a topographical, textured surface that follows the wood grain, and goes through an additional hand-grading to achieve a consistent blend of heartwood and sapwood lot to lot. Pika-Pika must have an oil prefinish applied to prevent sooty fingerprints during installation, and we have traditional oil as well as water-based options.

Where to apply

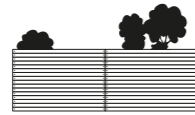
Our Yakisugi products are available in different profiles, dimensions and finishes and can be applied at various projects:



Cladding

exterior & interior

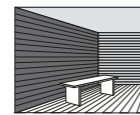
The traditional way to use Yakisugi (Shou Sugi Ban) is as an attractive siding option. While its beauty and design uniqueness are spectacular, in Japan it is mostly used as a standard wood siding with superior characteristics. But its true attractiveness comes when combined with ambitious architecture, showing stunning effects through contrasts and the richness of colours.



Fencing

exterior

Yakisugi fencing is a breathtaking addition to any outdoor space. They are found throughout Japan for privacy, functionality, or design purposes. Due to its texture and enigmatic beauty Yakisugi can often be found in landscape architecture – offering a sense of continuity and structure extending from the indoor to the outdoor space.



Other

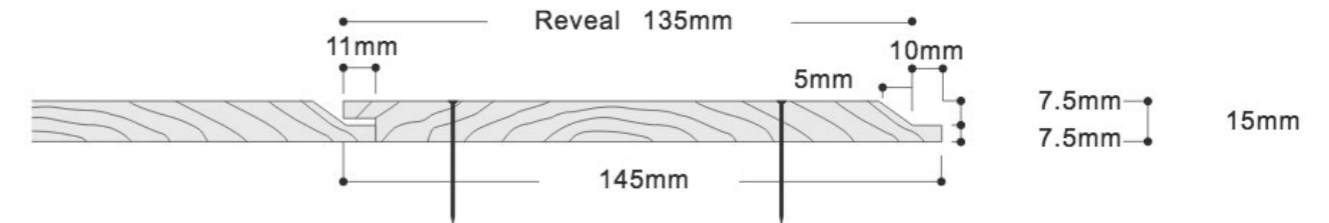
Decking, flooring, furniture, ...

The beauty of Yakisugi products opens the door for a variety of options including decking, flooring, and furniture. By applying a deep penetrating and fixating oil prefinish, the fragile soot surface can be well protected. Please contact us to discuss further on how you can make best use of our eye-catching Yakisugi products.

Dimensions

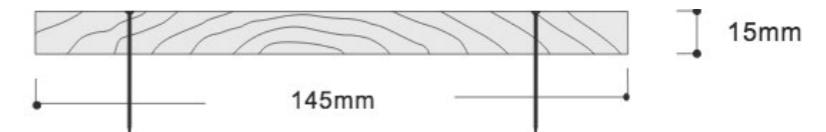
STANDARD SHIPLAP DIMENSIONS

145 mm actual width, max. 3970 mm actual lengths



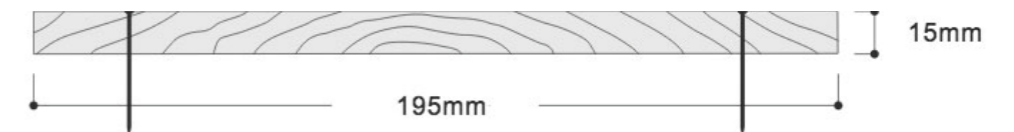
STANDARD SQUARE EDGE DIMENSIONS

145 mm actual width, max. 3970 mm actual lengths



STANDARD SQUARE EDGE DIMENSIONS

195 mm actual width, max. 3970 mm actual lengths

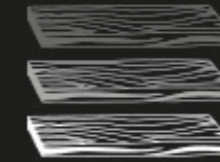
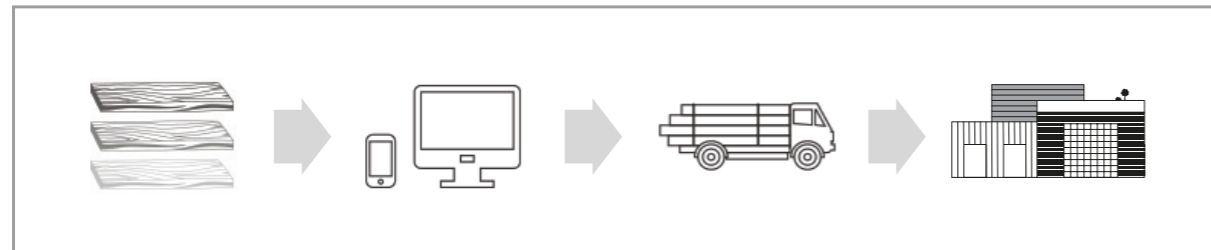


4 easy steps:

How to purchase Yakisugi

Our Yakisugi (Shou Sugi Ban) is a heat-treated timber siding product, which does not require any special techniques for installation. It rather is regularly installed similarly to any wood cladding. Projects usually are shipped ready to install.

We deliver prefinished, i.e. oiled to fix surface soot, and according to customer requirements add desired colour tone. Suyaki and Pika-Pika need prefinish treatment due to their delicate surface. Gendai can be installed with or without oil prefinish. Please follow our easy process to purchase charred wood.



1. Choose product

Our Yakisugi products come in 3 basic surfaces (Suyaki, Gendai, Pika-Pika) but further differentiate by profiles, dimensions and desired prefinish oil options. Please confirm the product specifications to see the fit to your requirements. Also, we are happy to send you samples specifically for those options you are interested in.



2. Place order

Our ordering process is very simple. You can purchase charred wood by requesting us for a quote (RFQ) regarding your specific project. Please understand we need some information about your project and the desired specs and volumes in order to provide you with an offer best fitting your requirements.

After receiving our offer, please review and clarify any open points. After you accept our offer, we will send you an invoice including payment instructions. In order to maintain our attractive prices, we request 100% upfront payment. Then, our production process will begin immediately after payment receipt.



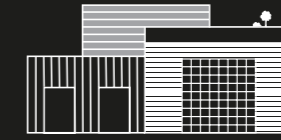
3. Receive Yakisugi

We strive to have your products ship-ready within two weeks maximum and will quick-start our consignment process after receiving your payment. We will coordinate with you and the freight forwarder an appropriate delivery date.

After that, we will ask you to ensure a contact person at the delivery site.

To offload you usually will need a forklift. The crates are designed to be easily opened with an impact driver and metal shears.

Please make sure the delivery contact and installer read the Offload and Installation Instructions before shipment.



4. Install Yakisugi

For installation, no special knowledge nor technique is required, but Yakisugi is installed like any other wood siding material. We recommend to acclimatise the products at site before installation. In our shipment, we include touch-up oil for eventual cuts, rips, and notches during installation. Additionally, the installer will receive our installation manual, and is also welcome to call us with any questions.

With Yakisugi siding the traditional Japanese sabi (patina) aesthetic values weathered patina over shiny and new. Therefore, many customers favour the natural greying process, as this is a completely natural product. Alternatively, exterior siding can be re-oiled at any time in the future to freshen up as desired. Depending on location and rain or sunlight exposure, usual maintenance (simple oiling) will be recommended after 5–10 years.



We are happy to hear from you

We are proud not only about our high-quality authentic products, but also pride ourselves for happy customers. Please feel free to contact us any time. We will make our utmost to satisfy with quick, reliable and quality-rich answers.

To get in contact with us, please use one of the following options:



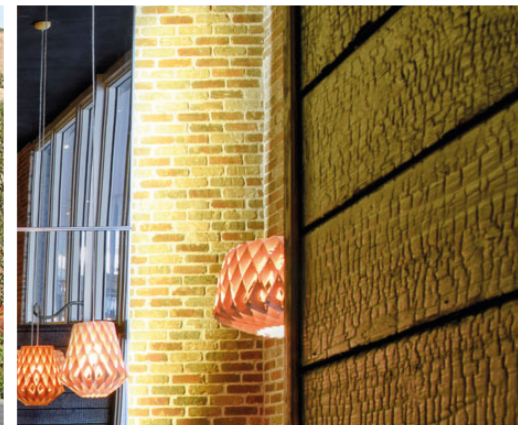
Use our contact form on
nakamotoforestry.eu/contact



Drop us a mail at
contact@nakamotoforestry.eu



Feel free to give us a call on
+49 160 97746415





This brochure is printed on recycled paper, which is FSC-certified and has the Blue Angel environmental seal.